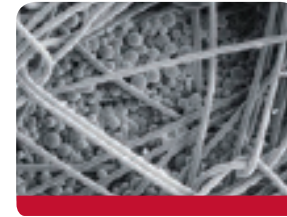
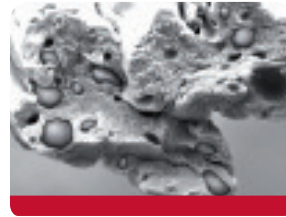
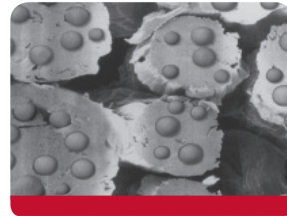




## Processes Overview

... not too hot  
... not too cold  
... just right™



	Outlast® polyester fiber	Outlast® acrylic fiber	Outlast® viscose fiber	Outlast® coating	Outlast® MIC
<b>Process</b>	Fiber with PCM	Fiber with PCM	Fiber with PCM	Coated/printed materials	Application process where an advanced formulation of Outlast technology is printed onto flat fabric
<b>Placement</b>	Products next to skin	Products next to skin	Products next to skin	Products close to skin	Products next to skin
<b>Product in the textile chain</b>	Fibers and yarns	Fibers and yarns	Fibers and yarns	Fabrics	Fabrics
<b>Suited for</b>	<ul style="list-style-type: none"> <li>• Knitwear</li> <li>• Socks</li> <li>• T-shirt/polo shirts</li> <li>• Shirts/blouses</li> <li>• Dresses</li> <li>• Sleepwear</li> <li>• Underwear/base layer</li> <li>• Trousers</li> <li>• Bed linen</li> <li>• Workwear/uniforms</li> </ul>	<ul style="list-style-type: none"> <li>• Knitwear</li> <li>• Socks</li> <li>• Blankets</li> <li>• Base layer</li> <li>• Accessories (beanies, knitted gloves, etc.)</li> </ul>	<ul style="list-style-type: none"> <li>• T-shirts/polo shirts</li> <li>• Shirts/blouses</li> <li>• Dresses</li> <li>• Sleepwear</li> <li>• Underwear/base layer</li> <li>• Bed linen</li> <li>• Mattress ticking</li> <li>• Workwear/uniforms</li> </ul>	<ul style="list-style-type: none"> <li>• Multi-layer products (e.g. jacket linings)</li> <li>• Apparel, accessories (jackets, gloves, hats, etc.)</li> <li>• Shoes</li> <li>• Bedding products (duvets, pillows, mattress pads, mattresses)</li> <li>• Seating</li> </ul>	<ul style="list-style-type: none"> <li>• T-shirts/polo shirts</li> <li>• Casual shirts</li> <li>• Sleepwear</li> <li>• Underwear</li> <li>• Bed linen</li> <li>• Mattress ticking</li> </ul>
<b>Not suited for</b>	<ul style="list-style-type: none"> <li>• Multi-layer products (e.g. jacket linings)</li> <li>• Outer fabrics</li> <li>• Products requiring high loading</li> <li>• Shoes</li> </ul>	<ul style="list-style-type: none"> <li>• Multi-layer products (e.g. jacket linings)</li> <li>• Outer fabrics</li> <li>• Products requiring a high loading</li> <li>• Shoes</li> </ul>	<ul style="list-style-type: none"> <li>• Multi-layer products (e.g. jacket linings)</li> <li>• Outer fabrics</li> <li>• Products requiring a high loading</li> <li>• Shoes</li> </ul>	<ul style="list-style-type: none"> <li>• Outer fabrics</li> <li>• Next to skin applications</li> </ul>	<ul style="list-style-type: none"> <li>• Multi-layer products (e.g. jacket linings)</li> <li>• Woven fabrics</li> <li>• Shoes</li> </ul>
<b>Benefits</b>	<ul style="list-style-type: none"> <li>• Drapes well in garments</li> <li>• Quick drying</li> <li>• Available in various staple lengths</li> <li>• Combines well with other fibers</li> <li>• Can be finished with various technologies</li> </ul>	<ul style="list-style-type: none"> <li>• Dyes well with superb fastness</li> <li>• Exceptional resistance to sunlight degradation</li> <li>• Highly resilient with good resistance to abrasion</li> <li>• Quick drying</li> <li>• Acrylic naturally wicks moisture away from the skin</li> </ul>	<ul style="list-style-type: none"> <li>• Softness and comfort similar to cotton or silk</li> <li>• Drapes well in garments</li> <li>• Absorbs moisture</li> <li>• Available in various staple lengths</li> <li>• Natural fiber based on cellulose</li> </ul>	<ul style="list-style-type: none"> <li>• Concentrated PCM levels for higher loading</li> <li>• Versatile (numerous applications in a variety of industries)</li> <li>• Breathable Outlast® thermo-adaptive matrix coating</li> <li>• Cooling effect (material is cool to touch)</li> </ul>	<ul style="list-style-type: none"> <li>• Can be applied to polyester, nylon, cotton or other natural fabrics</li> <li>• Durable through multiple washes</li> <li>• Wicking and wicking durability controlled by base fabric</li> <li>• Does not affect drape of fabric</li> <li>• Can be combined with other technologies (antimicrobials, wicking...)</li> </ul>
<b>Disadvantages</b>	Limited loading	Limited loading	Limited loading	<ul style="list-style-type: none"> <li>• Hand feel stiffer</li> <li>• Higher weight</li> </ul>	Individual development work may be necessary
<b>Procedure</b>	Customer can buy yarns or fabrics from licensed Outlast partners.	Customer can buy yarns or fabrics from licensed Outlast partners.	Customer can buy yarns or fabrics from licensed Outlast partners.	Customer can buy fabrics from Outlast or licensed Outlast partners.	Customer can buy fabrics or MIC treatment on own fabrics from Outlast.
<b>Care instructions</b>	Washing	Washing and dry cleaning	Washing and dry cleaning	Washing	Washing
<b>Testing / Certification</b>	DSC	DSC	DSC	DSC and TRF	DSC